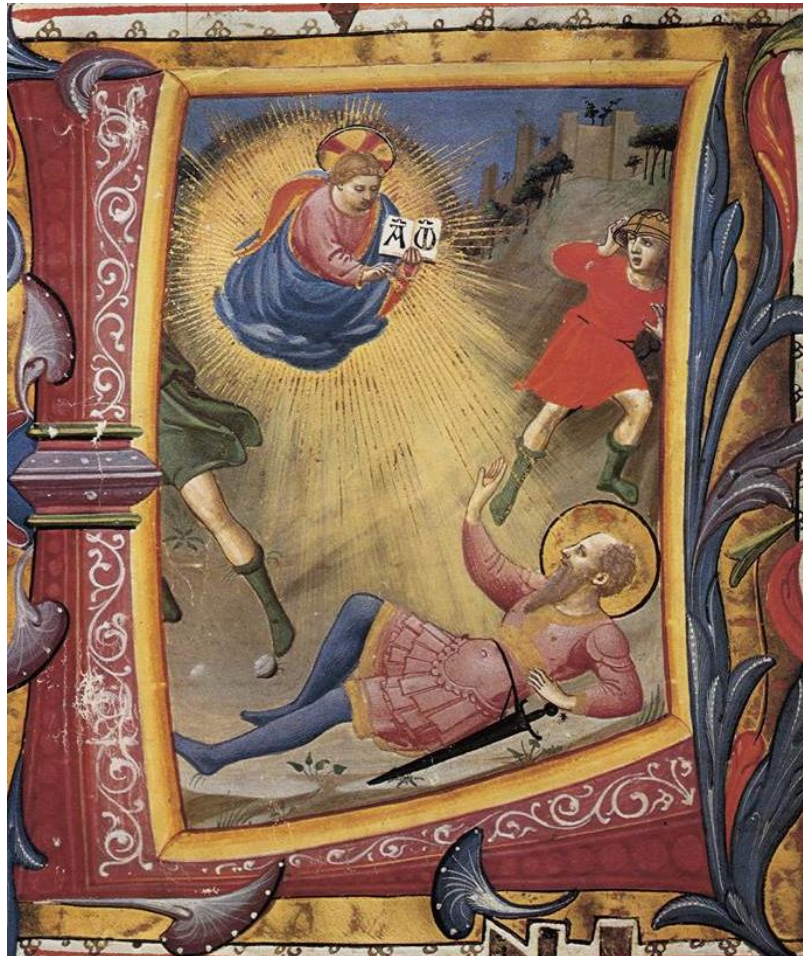




The Parish and Ward Church of
St Botolph-without-Bishopsgate
in the City of London
EC2M 3TL



*The Conversion of S Paul, MS illumination 1424-30
Fra Angelico (Museo di San Marco, Florence)*

Choral Mass

upon **The Conversion of S Paul**
and in the **Week of Prayer for Christian Unity**
Wednesday 25 January 2023
at 1.10 pm

Fr David Armstrong, Rector

Iestyn Evans, Director of Music

020 7588 3388 church@botolph.org.uk www.botolph.org.uk

St Botolph-without-Bishopsgate - a place of calm, sanctuary and God's love in the City

Welcome to St Botolph-without-Bishopgate.

Please forgive our appearance - we have begun the careful dismantling the existing pipe organ as part of the preliminary work towards for a new organ for St Botolph's. The work will always stop round service times, and we are doing our best to minimise noise and dust, but we apologise for any disruption or inconvenience.

*Fr David is away – in his absence we welcome as celebrant
Fr Paul Kennedy, Rector of St Vedast, Foster Lane,
and Priest-in-Charge of St Mary Aldermary.*

Mass setting: Messe à deux voix égales—Charles Gounod 1818-93

Opening Hymn: NEH 154 (verses 1-4; second tune)

A heavenly splendour from on high,
A light too great for mortal eye,
Deprives the hunter of his prey
And turns his threatening wrath away.

In darkened eyes, an inward light
Begins to shine upon his sight,
As in his heart he hears the call
To follow, and surrender all.

The Christ, for sinners crucified,
Whose risen power he had denied,
Now claims this servant for his own,
And bids him make the gospel known.

The nations listen to his voice,
And in the peace of Christ rejoice;
The Church on earth his praises sing,
Who led the Gentiles to their King.

Kyrie eleison: see the Mass book for translation of the Greek text

First Lesson: Acts 9: 1-22

Gradual: NEH 27 (verse 1)

How brightly shines the morning star!
With grace and truth from heav'n afar
Our Jesse tree now bloweth.
Of Jacob's stem and David's line,
For thee, my Bridegroom, King divine,

My soul with love o'erfloweth.
Thy word, Jesu, inly feeds us,
Rightly leads us, life bestowing,
Praise, O praise such love
o'erflowing.

Gospel Acclamation

*The refrain is sung first by
the Cantor **and then by all:***

This verse is sung by the Cantor:

You will be the Lord's witness to all the world
of what you have seen and heard.

and the refrain is then repeated by all

Gospel: S Matthew 19: 27-end

Ant.
6.

Lle-lú-ia, * alle-lú-ia, alle-lú-ia.

During the singing of the Offertory Hymn a collection will be taken up for Christ's work in this place. If you are a UK taxpayer please complete a Gift Aid envelope. We are also able to accept contactless payments – if you prefer to donate by this method please use the device on the table at the back of church or the QR code on the back of this service sheet.

Offertory Hymn: NEH 155 (first tune)

We sing the glorious conquest
Before Damascus' gate,
When Saul, the Church's spoiler,
Came breathing threats and hate;
The ravening wolf rushed forward
Full early to the prey;
But lo! the Shepherd met him,
And bound him fast today.

O Glory most excelling
That smote across his path!
O Light that pierced and blinded
The zealot in his wrath!
O Voice that spake within him
The calm, reproving word!
O Love that sought and held him
The bondman of his Lord!

O Wisdom, ordering all things
In order strong and sweet,
What nobler spoil was ever
Cast at the Victor's feet?
What wiser master-builder
E'er wrought at thine employ,
Than he, till now so furious
Thy building to destroy?
Lord, teach thy Church the lesson,
Still in her darkest hour
Of weakness and of danger,
To trust thy hidden power.
Thy grace by ways mysterious
The wrath of man can bind,
And in thy boldest foeman
Thy chosen saint can find!

Sanctus, Benedictus qui venit, & Agnus Dei: see the Mass book

Anthem during Communion:

How lovely are the messengers that preach us the gospel of peace!
To all the nations is gone forth the sound of their words,
through all the lands their glad tidings.

Romans 10: 15, 18

Felix Mendelssohn-Bartholdy 1809–47

Closing Hymn: NEH 51

Hail, thou Source of every blessing,
Sovereign Father of mankind!
Gentiles now, thy grace possessing,
In thy courts admission find.
Once far off, but now invited,
We approach thy sacred throne;
In thy covenant united,
Reconciled, redeemed, made one.

Now revealed to eastern sages,
See the Star of mercy shine;
Mystery hid in former ages,
Mystery great of love divine.
Hail, thou universal Saviour!
Gentiles now their offerings bring;
In thy temple seek thy favour,
Jesu Christ, our Lord and King.

Organ music: Allegro maestoso e vivace (Sonata No 2)

—Felix Mendelssohn-Bartholdy

FORTHCOMING SERVICES & NOTICES

Fr David sustained an injury to his right foot in December. Unfortunately, this has not healed as anticipated and has required minor surgery at St Thomas's Hospital; he is currently undergoing further treatment. He is at home and in good spirits, but is quite immobile and has been told that his foot needs total rest for a few weeks.

Church opening and service times

The church is open for public worship and private prayer every Monday to Friday 7.30 am to 5.30 pm, continuing to maintain God's physical presence in the City of London. Our current service pattern is: Choral Mass with sermon on Wednesdays at 1.10 pm, and Said Masses on Tuesdays and Thursdays at 12.10 pm. **With regret, while Fr David is away from church the 8.10 am Mass on Tuesdays is suspended.**

Tomorrow, Thursday 26 January: Mass at 12.10 pm

Next Tuesday, 31 January: Mass at 12.10 pm

Next Wednesday, 1 February: Choral Mass of Candlemas at 1.10 pm

Missa prima *Croce*; Responsum accepit Simeon *Byrd*;
Nunc dimittis a 5 *Palestrina*; Prelude in C, BWV 545 (i) *Bach*

Next Thursday, 2 February: Mass at 12.10 pm

Can you help us financially?

Our regular income continues to be depressed owing to the knock-on effects of Covid, with a reduction in our normal income streams including Hall and Court hire, service collections and alms donations as fewer people are working in and visiting the City of London. If you are in a position to give St Botolph's any financial support at this time:

- **Cash donations** (outside service times) may be placed in the alms boxes, or handed to a member of staff at any time. If you are a UK taxpayer please complete a Gift Aid envelope so we can claim back a further 25% from HMRC.
- **Card/contactless donations** can be made at any time via the device on the table at the back of church, **or this QR code**, and can be Gift Aided.
- **Credit card donations** can be made via the link on our website, and can be Gift Aided.

giftaid it



The Good Coffee Kiosk



Another way of supporting St Botolph's is by buying your hot drinks from the Bishopsgate entrance of the church: all the drinks are Fairtrade, and our barista José will give you a warm welcome and a loyalty card!

Opening hours Monday to Friday 7.00 am-2.00 pm.

See our website for more information about services and events and the latest news - including a dedicated page about the organ rebuild project at <https://botolph.org.uk/a-new-tune/>