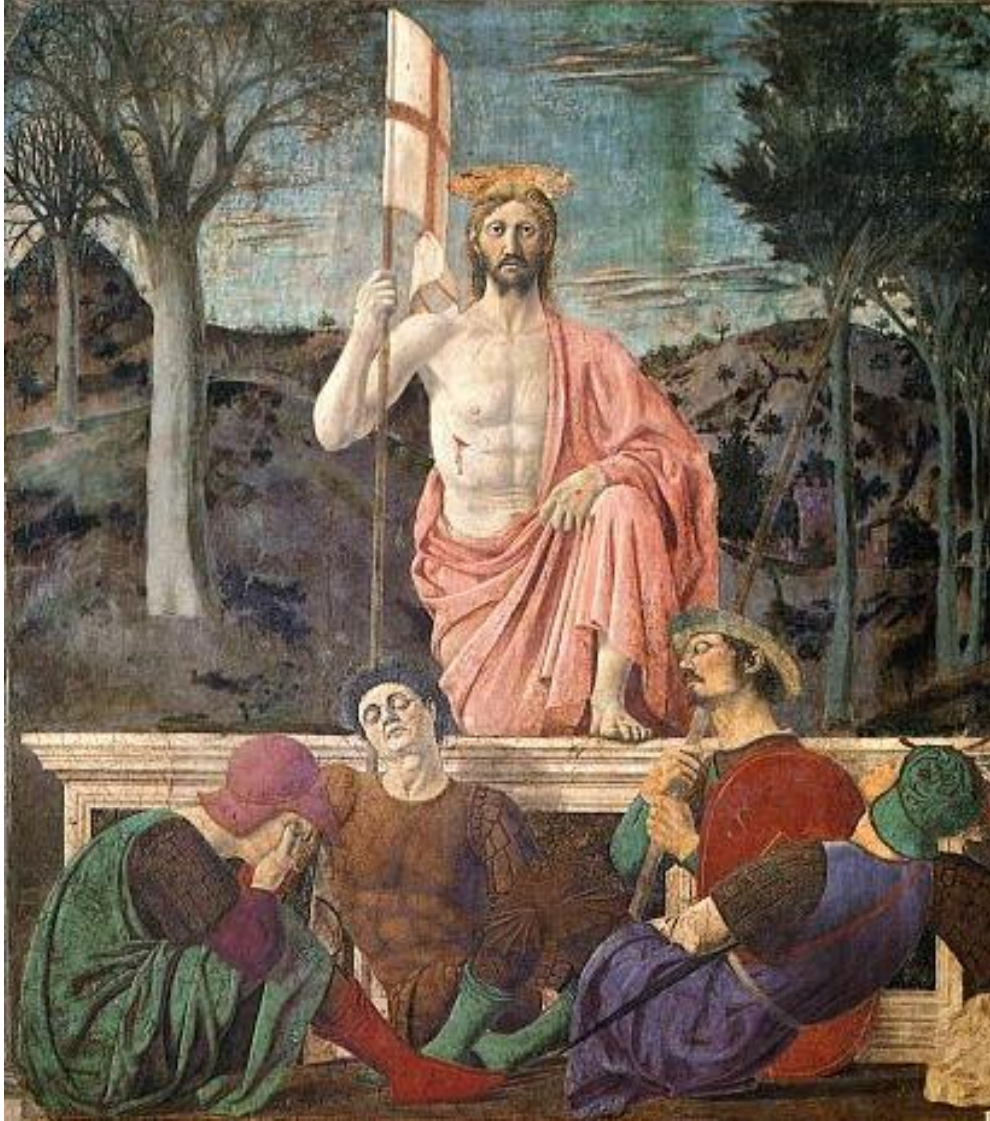




The Parish and Ward Church of
St Botolph-without-Bishopsgate
in the City of London
EC2M 3TL



Piero della Francesca, c. 1465, Museo Civico di Sansepolcro

Choral Mass

in the week of

The Sixth Sunday of Easter

Wednesday 8 May 2024 at 1.10 pm

The Revd David Armstrong, Rector

Iestyn Evans, Director of Music

020 7588 3388

church@botolph.org.uk

www.botolph.org.uk

St Botolph-without-Bishopsgate - a place of calm, sanctuary and God's love in the City

Welcome to St Botolph-without-Bishopsgate

Setting of the Mass: Mass in C—Anthony Werner 1817-66

Opening Hymn: NEH 114

Now is eternal life, If risen with Christ we stand, In him to life reborn, And holden in his hand;	For God, the living God, Stooped down to man's estate; By death destroying death, Christ opened wide life's gate.
No more we fear death's ancient dread, In Christ arisen from the dead.	He lives, who died; he reigns on high; Who lives in him shall never die.

Unfathomed love divine,
Reign thou within my heart;
From thee nor depth nor height,
Nor life nor death can part;
Our life is hid in God with thee,
Now and through all eternity.

Gloria in excelsis: see the Mass book for translation of the Latin text

First Lesson: Acts 10: 44-end

Gospel Acclamation

The refrain is sung first by the Cantor and then by all:

Ant.
6.
A



Lle-lú-ia, * alle-lú-ia, alle-lú-ia.

This verse is sung by the Cantor:

A little while and you will no longer see me, says the Lord:
and again a little while and you will see me.

and the refrain is then repeated by all

Gospel: S John 15: 9-17

During the singing of the Offertory Hymn a collection will be taken up for Christ's work in this place. If you are a UK taxpayer please complete a Gift Aid envelope. We are also able to accept contactless payments – if you prefer to donate by this method please use one of the devices at the front or back of church or the QR code on the back page of this order of service.

Offertory Hymn: NEH 124

Ye choirs of new Jerusalem,
Your sweetest notes employ,
The Paschal victory to hymn
In strains of holy joy.

How Judah's Lion burst his chains,
And crushed the serpent's head;
And brought with him from death's domains
The long-imprisoned dead.

From hell's devouring jaws the prey
Alone our Leader bore;
His ransomed hosts pursue their way
Where he hath gone before.

Triumphant in his glory now
His sceptre ruleth all;
Earth, heaven and hell before him bow
And at his footstool fall.

While joyful thus his praise we sing,
His mercy we implore,
Into his palace bright to bring
And keep us evermore.

All glory to the Father be,
All glory to the Son,
All glory, Holy Ghost, to thee,
While endless ages run. Alleluya! Amen.

Sanctus, Benedictus qui venit, and Agnus Dei:

see the Mass book for translations of the Latin texts

Anthem during Communion:

Christo resurgenti, Christo triumphanti,
applaudant sydera, alleluia.
Fide vindicata, morte superata,
laetentur omnia, alleluia.

*With Christ risen, with Christ triumphant,
the stars clap their hands, alleluya.
With faith vindicated, with death conquered,
all things rejoice, alleluya.*

*François Couperin 1668–1733
(from Motet pour le Jour de Pâques)*

Closing Hymn: NEH 105 (verses 1-3, 6; second tune)

Christ the Lord is risen again!
Christ hath broken every chain!
Hark, the angels shout for joy,
Singing evermore on high, Alleluya!

He who gave for us his life,
Who for us endured the strife,
Is our Paschal Lamb to-day!
We too sing for joy, and say Alleluya!

He who bore all pain and loss
Comfortless upon the Cross,
Lives in glory now on high,
Pleads for us, and hears our cry. Alleluya!

Thou, our Paschal Lamb indeed,
Christ, to-day thy people feed;
Take our sins and guilt away,
That we all may sing for ay, Alleluya!

Organ music: Dialogue sur les grands jeux (Messe à l'usage des paroisses)
—François Couperin 1668-1733

All are warmly invited to join us for refreshments following the service.

FORTHCOMING SERVICES & NOTICES

ELECTORAL ROLL REVISION—apply to join today!

One of the many great strengths of the Church of England is its system of governance, from parish level to General Synod. At parish level, the Electoral Roll ensures that members of a church can shape the local mission and ministry by electing the officers necessary to do that hard work.

Electoral Roll



Belong



Participate



Contribute

We encourage regular worshippers at St Botolph's to apply: even if you are already on the Roll at your Sunday or 'home' church, you can be on the Roll here too.

Our Electoral Roll will be closed for its annual revision from tonight to tomorrow, 9 May, so this is your last chance for your name to be added until after the Annual Parochial Church Meeting on 22 May. Please collect and complete a form after the service and **return it today** either in paper form to the church office, or by email to Mhairi at church@botolph.org.uk.

Church opening and service times

The church is open for public worship and private prayer every Monday to Friday 7.30 am to 5.30 pm, continuing to maintain God's physical presence in the City of London. Our normal service pattern is:

Tuesdays - Said Masses at 8.10 am and 12.10 pm

Wednesdays - Choral Mass with sermon at 1.10 pm

Thursdays – Said Mass at 12.10 pm (*NB not tomorrow, Ascension Day*)

Choral services are livestreamed on our YouTube channel (accessible from the church website www.botolph.org.uk).

Tomorrow, Thursday 9 May - The Ascension of Our Lord: Choral Mass at 1.10 pm

Missa 'Ascendens Christus' *Victoria*

Ascendit Deus *Philips*

Heut' triumphieret Gottes Sohn, BWV 630 *Bach*

NB there will be no Said Mass at 12.10 pm tomorrow, Ascension Day

Next Tuesday, 14 May: Masses at 8.10 am and 12.10 pm

Next Wednesday, 15 May: Choral Mass of S Matthias at 1.10 pm

Missa sexti toni *Croce*; Tradent enim vos *Palestrina*

Processional *Mathias*

Next Thursday, 16 May: Mass at 12.10 pm

Choral concert in church at 6.30 pm



Photograph by Kaupo Kikkas used with permission

We are delighted to welcome back on 16 May at 6.30 pm for a short concert and reception the acclaimed ensemble **Siglo de Oro** - praised by Gramophone magazine as 'confident, sonorous and full of character' - and its director Patrick Allies. All are warmly invited to attend this short concert giving a preview of the 2024-25 season, followed by a chance to greet the musicians over a glass of wine.

More information and tickets from <https://www.siglodeoro.co.uk>

12-18 May - Christian Aid Week

As usual St Botolph's will be supporting Christian Aid – all service collections and alms given in church next week will be sent to the charity for their work towards bringing an end to poverty around the world.



This Saturday, 11 May - Christian Aid London Freedom Walk

As a curtain-raiser to Christian Aid Week, Christian Aid is once again offering a London Freedom Walk, inspired by previous Circle the City events. Following a 10k route around the capital, walkers discover the history of some of the city's churches and the stories behind the work they do, while also raising money for Christian Aid.

<https://www.christianaid.org.uk/get-involved/events/london-freedom-walk>

13-19 May - Mental Health Awareness Week

The focus for this year's Mental Health Awareness Week is 'movement – moving more for our mental health'. The organisers continue to demand change - making sure that improving mental health is a key priority for the government and society as a whole.

Some resources for more information, advice and events:

Mental Health Foundation - <https://www.mentalhealth.org.uk>

MIND - <https://www.mind.org.uk>

In the City of London, mental health is a focus of the Lord Mayor's Appeal:

<https://www.thelordmayorsappeal.org/news-and-events/events-calendar/1329/mental-health-awareness-week-2024/>

Wednesday 22 May—St Botolph's Annual Meetings

The Annual Vestry Meeting and Annual Parochial Church Meeting will take place on **Wednesday 22 May at 2.00 pm, in church** following the Choral Mass. Fr David and the Churchwardens very much hope that as many as possible of our regular 'family' will wish to hear reports both of what has happened during the past year at St Botolph's and also of our future projects.

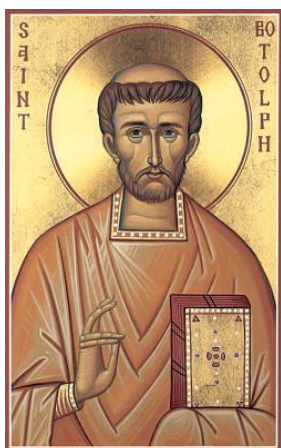
At the **Vestry Meeting** we appoint our Churchwardens for the forthcoming year. Residents of the parish on the electoral register are eligible to attend this meeting in addition to members of the congregation. *Candidates for the post of Churchwarden must be over 21, on the Electoral Roll, and actual communicant members of the Church of England. Nominations must be proposed and seconded, and candidates must indicate their willingness to stand.*

This will be followed by the **Annual Parochial Church Meeting**, at which we elect members of our Parochial Church Council (PCC), and receive from the Parochial Church Council the Accounts and Annual Reports. *Candidates for election to the PCC must have been on the Electoral Roll for at least six months, and be actual communicant members of the Church of England.*

There is also a brief meeting of the newly-elected **Parochial Church Council** immediately after these two meetings.

Mhairi Ellis, PCC Secretary

Looking ahead to a special celebration next month



WEDNESDAY 12 JUNE *

All are invited to join us as we celebrate
our patron St Botolph

CHORAL PATRONAL FESTIVAL MASS at 1.10pm

There will be splendid choral and organ music from St Botolph's Choir and Iestyn Evans, and the service will be followed by the traditional Parish Party including a special St Botolph Cake.

Icon of St Botolph (copyright © Holy Transfiguration Monastery, Brookline, Mass., and used by permission)

Reflecting the war in Gaza and violence throughout the Holy Land, our guest preacher this year is to be The Reverend Canon Daniel Burton, Vicar of St Mary with St Peter Oldham, Greater Manchester, and chair of Action around Bethlehem Children with Disability ('ABCD Bethlehem'). Founded in 1986 as a UK registered charity, ABCD Bethlehem works tirelessly to support the needs of disabled children and young adults, and their families in the West Bank. In the mid-1980s Fr Daniel worked for two years in a Palestinian Children's Home in Ramallah, and for 20 years he was a trustee of the charity Embrace the Middle East. He has led many pilgrimages and visits to the Middle East.

The war in Gaza has greatly increased tension in the West Bank and has resulted in significantly higher rates of attrition and further restrictions on the population. ABCD's rehabilitation centre in Nour Shams has twice been ransacked by government forces; the charity has undertaken to refurbish and restock this centre and to continue to support the children and families it serves. To help fund this work ABCD is running an emergency appeal, details of which may be found on their website: <https://www.abcdbethlehem.org/>. St Botolph's has supported ABCD for some years, most recently with our 2023 Advent collections - and the collection at the Patronal Festival Mass will go towards the emergency appeal as well.

** NB the date of 12 June replaces the earlier advertised date of 19 June*

Can you help us financially?

Our regular income continues to be depressed owing to the knock-on effects of Covid, with a reduction in our normal income streams including Hall and Court hire, service collections and alms donations as fewer people are working in and visiting the City of London. If you are in a position to give St Botolph's any financial support at this time: perhaps you might consider giving by standing order or direct debit, or a one-off donation? You will find more information about ways of supporting us on the website at <https://botolph.org.uk/support-us/>, and the Administrator can help with queries (church@botolph.org.uk).

- **Cash donations** (outside service times) may be placed in the alms boxes, or handed to a member of staff at any time. If you are a UK taxpayer please complete a Gift Aid envelope so we can claim back a further 25% from HMRC.
- **Card/contactless donations** can be made at any time via the device on the table at the back of church, **or this QR code**, and can be Gift Aided.
- **Credit card donations** can be made via the link on our website, and can be Gift Aided.

giftaid it



The Good Coffee Kiosk



We are excited to announce that the Kiosk will be re-opening soon with new staff, new products and a new look - but still Good Coffee! We have been working with Melina Hermann of ECV Solutions Ltd on plans for the future of the kiosk, and we look forward to seeing the results which this partnership will produce. We hope to have a date soon for the grand re-opening of the Kiosk - announcements will be made on the website, in service sheets and notices round the church, and in our monthly email newsletter. *Find out more about Melina at:*

<https://botolph.org.uk/the-good-coffee-kiosk/>

Monthly newsletter

Our monthly newsletter is circulated by email to members of the St Botolph's 'family'. If you do not already receive this and would like to, it is easy to subscribe via the website, or by emailing the Administrator at church@botolph.org.uk.