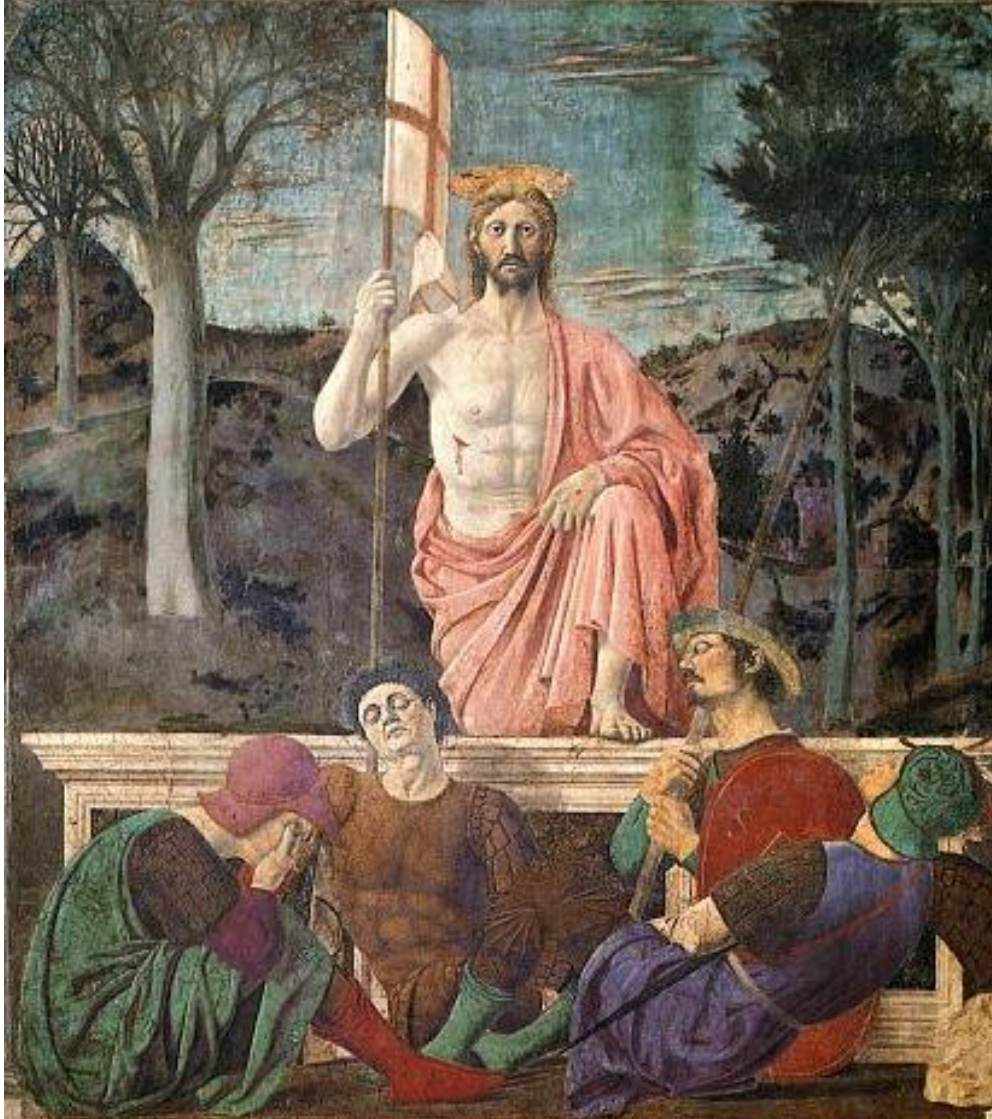




The Parish and Ward Church of
St Botolph-without-Bishopsgate
in the City of London
EC2M 3TL



Piero della Francesca, c. 1465, Museo Civico di Sansepolcro

Choral Mass

in the week of **The Fourth Sunday of Easter**
Wednesday 29 April 2026 at 1.10 pm

The Revd David Armstrong, Rector

Iestyn Evans, Director of Music

020 7588 3388 church@botolph.org.uk www.botolph.org.uk

St Botolph-without-Bishopsgate - a place of calm, sanctuary and God's love in the City

Welcome to St Botolph-without-Bishopsgate

Fr David is on sabbatical until July; in his absence we are delighted to welcome as celebrant and preacher Fr Christopher Trundle, Vicar of Our Most Holy Redeemer, Clerkenwell.

If you have any comments on our new Choral Mass books, ahead of a professional print run, please send to office@botolph.org.uk.

Setting of the Mass: Missa Brevis in C, K 258 ('Spaur' or 'Piccolomini' Mass)—Wolfgang Amadeus Mozart 1756–1791

Opening Hymn: NEH 105 (verses 1-3, 6; second tune)

Christ the Lord is risen again!
Christ hath broken every chain!
Hark, the angels shout for joy,
Singing evermore on high,
Alleluya!

He who gave for us his life,
Who for us endured the strife,
Is our Paschal Lamb to-day!
We too sing for joy, and say
Alleluya!

He who bore all pain and loss
Comfortless upon the Cross,
Lives in glory now on high,
Pleads for us, and hears our cry.
Alleluya!

Thou, our Paschal Lamb indeed,
Christ, to-day thy people feed;
Take our sins and guilt away,
That we all may sing for ay,
Alleluya!

Gloria in excelsis: see the Mass book for translation of the Latin text

First Lesson: Acts 2: 42-end

Gospel Acclamation

*The refrain is sung first by the Cantor **and then by all:***



Al-le-lu-ya, al - le-lu ya, al-le - lu - ya.

This verse is sung by the Cantor:

The Lamb at the centre of the throne will be their shepherd
and he will guide them to springs of the water of life.

and the refrain is then repeated by all.

Gospel: S John 10: 1-10

During the singing of the Offertory Hymn a collection will be taken up for Christ's work in this place. If you are a UK taxpayer please complete a Gift Aid envelope. If you prefer to make a contactless donation please use one of the devices at the front or back of church or the QR code on the back of this service sheet.

Offertory Hymn: NEH 106 (tune 219)

Come, ye faithful, raise the strain
Of triumphant gladness;
God hath brought his Israel
Into joy from sadness;
Loosed from Pharaoh's bitter yoke
Jacob's sons and daughters;
Led them with unmoistened foot
Through the Red Sea waters.

'Tis the spring of souls to-day;
Christ hath burst his prison,
And from three days' sleep in death
As a sun hath risen;
All the winter of our sins,
Long and dark, is flying
From his light, to whom we give
Laud and praise undying.

Now the queen of seasons, bright
With the day of splendour,
With the royal feast of feasts,
Comes its joy to render;
Comes to glad Jerusalem,
Who with true affection
Welcomes in unwearied strains
Jesu's Resurrection.

Neither might the gates of death,
Nor the tomb's dark portal,
Nor the watchers, nor the seal,
Hold thee as a mortal;
But today amidst thine own
Thou didst stand, bestowing
That thy peace which evermore
Passeth human knowing.

Sanctus, Benedictus, and Agnus Dei:

see the Mass book for translation of the Latin texts

Anthem during Communion:

Surrexit pastor bonus qui posuit animam suam pro ovibus suis,
et pro grege suo mori dignatus est, alleluia.

*The good shepherd has arisen, who laid down his life for his sheep,
and for his flock deigned to die, alleluia.*

After John 10:11

Jacob Regnart c.1540–1599

Closing Hymn: NEH 112 (verses 1-3)

Jesus lives! thy terrors now
Can, O Death, no more appal us;
Jesus lives! by this we know
Thou, O grave, canst not enthrall us.
Alleluya!

Jesus lives! henceforth is death
But the gate of life immortal;
This shall calm our trembling breath,
When we pass its gloomy portal.
Alleluya!

Jesus lives! for us he died;
Then, alone to Jesus living,
Pure in heart may we abide,
Glory to our Saviour giving.
Alleluya!

Organ music: Basse de trompette

François Couperin 1668-1733

All are warmly invited to join us for refreshments following the service.

FORTHCOMING SERVICES & NOTICES

Church opening and service times

The church is open for public worship and private prayer every Monday to Friday from 7.30 am to 5.30 pm. Our normal service pattern is:

Tuesdays - Said Mass at 12.10 pm (*This is now the only Mass on Tuesday*)

Wednesdays - Choral Mass with sermon at 1.10 pm

Thursdays - Said Mass at 12.10 pm

Choral services are livestreamed on our YouTube channel (accessible from the church website www.botolph.org.uk).

Tomorrow, Thursday 30 April: Mass at 12.10 pm

Next Tuesday, 5 May: Mass at 12.10 pm

Next Wednesday, 6 May: Choral Mass at 1.10 pm

Petite Messe Alary; Regina Caeli Cifra; Menuet Gothique Boëllmann

Next Thursday, 7 May: Mass at 12.10 pm

Thursday 14 May: Vocal ensemble Exaudi present 'Sweet, stay awhile: Songs around Dowland' at 6.00 pm. Tickets £15 from exaudi.org.uk.

Can you help us financially?

- **Cash donations** (outside service times) may be placed in the alms boxes, or handed to a member of staff at any time. If you are a UK taxpayer please complete a Gift Aid envelope so we can claim back a further 25% from HMRC.
- **Card/contactless donations** can be made at any time via the device on the table at the back of church, **or this QR code**, and can be Gift Aided.
- **Credit card donations** can be made via the link on our website, and can be Gift Aided.

giftaid it



ELECTORAL ROLL REVISION 2026

One of the many great strengths of the Church of England is its system of governance, from parish level to General Synod. At parish level, the Electoral Roll ensures that members of a church can shape the local mission and ministry by electing the officers necessary to do that hard work. **We encourage regular worshippers at St Botolph's to apply:** even if you are already on the Roll at your Sunday or 'home' church, you can be on the Roll here too. Please collect and complete a form after the service and return it either in paper form to the church office, or by email to Mhairi at church@botolph.org.uk.